

# Railroad Power Line Upgrades Fairfield to Congress

Phase 1 and 2, 2024 Update

## Project Overview

**Phase 1-** Ash Creek Substation to Congress Street Substation – Rebuild approximately 3 miles of UI 115-kV overhead electric transmission line assets, from Ash Creek Substation located in Bridgeport, CT to Congress Street Substation located in Bridgeport, CT. Relocate the transmission lines off the existing railroad catenary bonnets (see picture below) and install them on independent single- or double-circuit monopoles with new insulators, wire, and hardware within or directly adjacent to the CT DOT-owned railroad corridor.

**Phase 2-** Sasco Creek to Ash Creek Substation - Rebuild approximately 4 miles of 115-kV overhead transmission line assets from the UI/Eversource transmission system interface, between Eversource’s structures 647 located in Westport, CT and UI’s structure 648 located in Southport, CT just east of Sasco Creek in Southport, to Ash Creek Substation in Bridgeport. The scope of this phase is to relocate the transmission lines off the existing southern railroad catenary bonnets, (overhead wire systems) along with the single circuit monopoles on the north side of the tracks, onto new independent double-circuit monopoles with new insulators, wire and hardware within or adjacent to the CT DOT-owned railroad corridor on the north side of the tracks.

The decommissioned 115-kV assets within the project area will be removed as part of the project.

UI will be seeking temporary and permanent easements in areas where needed.

## Project Purpose and Need

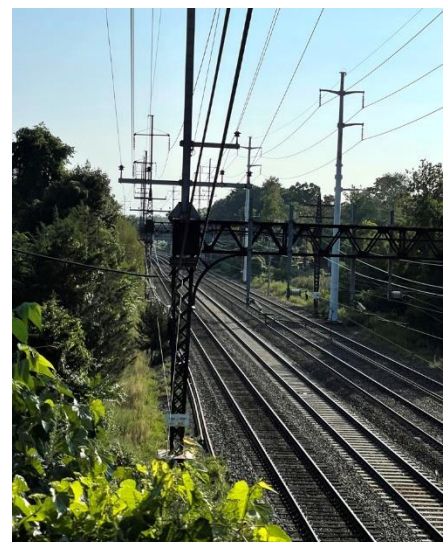
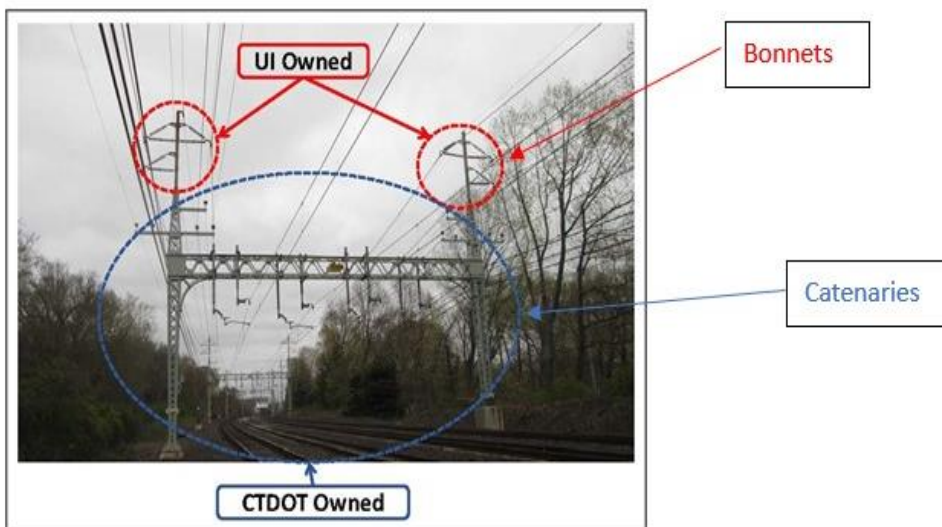
The purpose of the Project is based on an asset condition assessment performed in 2019 of the existing UI transmission infrastructure. Based on that assessment and the CT Siting Council’s decision, UI will remove its existing 115-kV lines and infrastructure (bonnets and associated wire and hardware) from the CT DOT-owned railroad catenary structures that span the Metro-North Railroad (MNR) tracks from Southport through Fairfield and Bridgeport. The 115-kV lines will be rebuilt on new single or double-circuit monopoles, which will be located within or directly adjacent to the CT DOT railroad corridor. These upgrades will help maintain system reliability, climate resiliency, preserve safety within and adjacent to the transmission lines, and provide technological enhancements to legacy system equipment along with support for future CT DOT plans along the railroad corridor.

## Project Scope

- Staking, erosion and sediment controls, vegetation clearing, access road and work pad construction.
- Installation of new transmission monopoles, supported on drilled piers, with associated wire and hardware.
- Restoration aligned with property owner interaction and permitting requirements.

## Benefits to the Region

The upgrades will improve the reliability of UI’s transmission infrastructure aligned with other Railroad Program initiatives, and resiliency of the transmission system that directly supplies power to several UI substations in Fairfield and Bridgeport, ensuring that safe and reliable transmission of power is maintained for our customers throughout Fairfield County, in accordance with industry reliability and safety standards.



## Project Location

Municipalities: Fairfield, Bridgeport

County Impacted: Fairfield

## Estimated Timetable Phase 1 Schedule Status *(subject to change)*

Due Diligence Activities Complete

Engineering: 90% design received Q2 2024

Siting: Complete  
\*UI will be submitting the Develop & Management Plan for Phase 1 work to the CSC in Q2 2025

Environmental Permitting: Q2 2025

Start of Construction: Q3-4 2025

In-Service Date: Q3 2029

## Estimated Timetable Phase 2 Schedule Status *(subject to change)*

Due Diligence Activities Q3 2024

Engineering: 30% Q1 2025

Siting: Complete  
\*UI will be submitting the Develop & Management Plan in Q1 2027

Environmental Permitting: TBD based on due diligence information, further updates to come

Start of Construction: TBD based on due diligence information, further updates to come

In-Service Date: TBD based on due diligence information, further updates to come



**Project Information Line:** 888.848.3697

**Website:** [UIRailroadTLineUpgrades.com](http://UIRailroadTLineUpgrades.com)

**Email:** [outreach@uinet.com](mailto:outreach@uinet.com)

